

SMITH COLLEGE.

# Lazarus Center

FOR CAREER DEVELOPMENT



2024-25 ANNUAL REPORT

# Dean's Statement

## Table of Contents

Dean's Statement	1
First-Destination Outcomes	2
Employer Engagement	4
Career Education	6
Career Equity	8
Early Engagement	10
Career Communities	12
Career Treks	19
Alum Engagement	20
Internships	22
Fellowships	23
Partnerships	24

At Smith, we are guided by our mission to develop “engaged global citizens and leaders to address society’s challenges.” This mission is both enduring and prescient, and it motivates our work in the career center in times like these.

You’ll see in this report that Smithies are accepted by top graduate schools and hired by prominent employers, which sets them up for lives of distinction across all industries. You will also see that we are doing more: We are preparing global leaders to redefine the future of work and to craft working lives that are remunerative and impactful.

Here are some highlights from the last year, supported by donors and partners like you:

- We hosted more than **80 programs** in partnership with alums, including a powerful panel/networking event called Human Rights Careers: A World of Possibilities.
- We engaged **65% of first-year students** in career advising and programming and partnered with more than **30% of faculty** to connect curricula to career planning.
- We maintained our position as a **top producer of Fulbright scholars** and earned the college’s **first-ever Schwarzman Scholar award**, granted to **Cowiya Arouna ’21**.
- We prepared for the opening of the **new Kathleen McCartney Hall**—a vibrant hub where students can imagine their own powerful and purposeful futures with the help of the Lazarus Center and the Wurtele Center for Leadership—scheduled for October 2025.

In a climate of uncertainty, community sustains us. Our students are bolstered by the thousands of alums who have volunteered to be informal mentors on Smith Career Connect. They are inspired to see alums at work during employer site visits to places that include Condé Nast, Google, and the Pentagon. They are motivated by alums like **Nicole Kenney ’06**, who, at the career summit hosted by the Black Students’ Alliance, insisted that students must “dream beyond the fear.”

Our students are tenaciously reimagining their futures, dreaming beyond their fears of the moment to what might be possible. Let us dream along with them and offer whatever knowledge and resources we can to confront the global challenges of today—and tomorrow.

With appreciation,

**Faith McClellan**  
DEAN OF CAREER DEVELOPMENT



# Class of 2024

# First-Destination Outcomes

94%

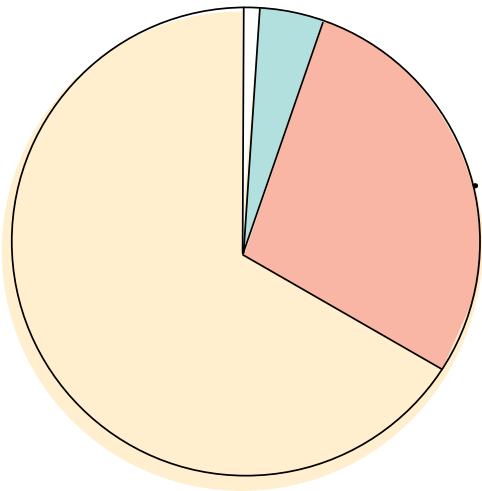
OF SMITHIES ARE  
EMPLOYED, IN GRADUATE  
SCHOOL, OR IN  
SERVICE PROGRAMS

\$62,566

IS THEIR AVERAGE  
FULL-TIME STARTING  
COMPENSATION  
(INCLUDING BONUSES)

## TOP GRADUATE SCHOOLS

- Boston University
- Columbia University
- Harvard University
- Johns Hopkins University
- Massachusetts Institute of Technology
- Tufts University
- University of Massachusetts Amherst
- Yale University



## A SELECTION OF EMPLOYER PARTNERS WHO HIRED CLASS OF 2024 SMITHIES:

- Abbott Laboratories
- Brigham and Women's Hospital
- Charles River Associates
- Epic Systems
- Louis Dreyfus Company
- Mayo Clinic
- Planned Parenthood
- TD Cowen

62% EMPLOYED

31% CONTINUING EDUCATION

6% STILL SEEKING

1% VOLUNTEER SERVICE

## WHERE ARE THEY NOW?



BARETI

## Gracia Bareti '24

MAJOR: STATISTICAL & DATA SCIENCES

Bareti, an active leader in the Black Students' Alliance while at Smith, is now a digital analyst at Nuuly—a fast-paced clothing subscription company under URBN.



CHIU

## Ming-xue Gilje Chiu '24

MAJOR: EAST ASIAN LANGUAGES & CULTURES  
MINOR: ENVIRONMENTAL SCIENCE & POLICY

Chiu, who was a regular at her academic department's weekly Chinese language lunch, is earning a fully funded Master of Law in China Studies (Law and Society) at the Yenching Academy of Peking University before going on to law school at the Georgetown University Law Center.



LEE

## Thatcher Lee '24

MAJOR: CHEMISTRY

Lee, who could often be found playing the cello in Sage Hall, is currently pursuing a doctorate in chemical biology at the Massachusetts Institute of Technology.



MCKAY

## Ciara McKay '24

MAJOR: ENGLISH LANGUAGE & LITERATURE  
MINOR: GOVERNMENT

McKay was a DJ all four years of college for Smith's radio station, WOZQ, and is now an editorial assistant at Wiley working on advanced chemistry and chemical engineering titles.

# Employer Engagement

The employer engagement team facilitates connections between students and employers in a diverse range of industries, increasing students’ access to rewarding career opportunities. They host recruitment events and skill-building workshops, including career fairs and company site visits. Many of our employer partnerships are built through strong relationships with Smith alums.

.....

**456**

EMPLOYERS PARTICIPATED  
IN RECRUITING EVENTS FOR  
SMITH STUDENTS



As part of our Tech Trek in April, a group of students met with LinkedIn staff at their headquarters in New York City.

## SKILL-BUILDING OPPORTUNITIES

The Lazarus Center organizes popular skill-building workshops to provide students with highly sought-after skills for jobs and internships across industries.

This year, the Lazarus Center partnered with more employers than ever before to offer workshops focused on critical career skills. Many of our new employer-led programs taught technology skills, helping to fill a gap identified by students. Thanks to growing partnerships, we offered relevant workshops on current industry best practices, including:

- IBM’s Making AI Smarter and More Focused With Retrieval-Augmented Generation (RAG)
- LinkedIn’s Rock Your LinkedIn Profile
- Visa’s AI Trends in the Financial Services Industry

## OTHER ROUTINELY OFFERED SKILL-BUILDING WORKSHOPS INCLUDE:

- Excel Fundamentals for Liberal Arts Students
- Wall Street Prep: Accounting, Financial Statement Modeling, and Valuation Boot Camp

## A SELECTION OF THE LAZARUS CENTER’S EMPLOYER PARTNERS

AmeriCorps	Cognex Corporation	FTI Consulting	Northampton Center for the Arts
Analysis Group	Covestro	Hachette Book Group	Peace Corps
Bitsight	Deloitte	IBM	Sony Music Entertainment
Boston Children’s Hospital	DraftKings	LinkedIn	Spectrum
Broad Institute	Edelman	Massachusetts Life Sciences Center	TelevisaUnivision
Charles River Associates	Emerald Advisors	Massachusetts Trial Court	TRC Companies
City Year	Epic Systems	MFS Investment Management	Visa
Citizen Film	Fidelity Investments	Morgan Stanley	Werfen
Consigli Construction	Five Rings Capital	M&T Bank	Youth Villages

.....

## CAREER FAIRS

**Megan Varnum ’24** (left), a software engineer at Arista Networks, represented one of the 74 employers at Smith’s fall career fair. “I am looking for Smithies who are curious, enthusiastic, and a little bit stubborn when it comes to solving problems and figuring out how things work,” Varnum says.

Smith hosts four annual career fairs, including a STEM & Health Professions Career Fair and the Inclusive Recruiting Summit. This year, nearly 600 Smith students and more than 100 students from peer institutions had the opportunity to connect with 143 employers representing a variety of professional areas.



## ONE-ON-ONE SUPPORT

Our team of career advisers provides year-round personalized guidance to students and recent graduates—1,227 of them booked appointments this year (and many came back repeatedly)! Smithies seek our support on a wide range of topics, including exploring how their academic interests intersect with career opportunities; seeking out and preparing applications for internships, research roles, and jobs; learning how to network; preparing for interviews; and understanding and negotiating job offers. We also work closely with students who are pursuing graduate or professional school as their next step.

## PEER ADVISING

A first stop for many students is with our peer advisers—students who are trained to help fellow Smithies build and improve their résumés and cover letters, search for internships and jobs, print business cards, and borrow suit pieces for interviews or conferences. Peer advisers offer weekday and evening drop-in hours at the Lazarus Center, and they collaborate with student organizations and residence houses to provide customized introductory workshops on career development topics, including how to start networking.

2,748

TOTAL ONE-ON-ONE  
APPOINTMENTS

## DESIGNING YOUR PATH

Career advisers collaborated with Jessica Bacal, Smith's director of reflective practices, to redesign and co-teach the one-credit course Designing Your Path (IDP 132) for the 2024–25 academic year. This class helps students explore paths that are both personally meaningful and impactful beyond themselves. Through discussions with peers, family, college staff, faculty, and alums, along with readings and self-assessments, students learn to research careers, generate ways to test their career ideas, and prepare application materials.

“It's been fantastic to hear their evolving perspectives on their academic and career goals, and to see their growing skills and confidence when engaging in professional conversations,” says Jason Bauer-Clapp, director of career education, who worked with the same group of students weekly over the course of the semester.



## PROOF POSITIVE

**Rory Harper '25** was about to finish her first semester at Smith when she walked into the Lazarus Center for an appointment with a career adviser. She knew she wanted to go to law school and eventually work in government but didn't know where to start.

“As a first-generation college student, navigating the law school process without support would've proved very difficult,” says Harper. She left that appointment with valuable tips for finding internships that would help pave her unique path to law school.

Over the course of her four years, Harper connected with career advisers; participated in the Government, Law, Policy, & International Affairs Career Community; and met with peer advisers.

Anna Silverstein, assistant director of graduate & professional school advising, met with Harper routinely, especially during her senior year. At their one-on-one appointments, Harper sought guidance on creating an application timeline and school list, preparing for the Law School Admission Test, and crafting a strong application. Silverstein, whose background is in writing, also provided in-depth feedback on Harper's application essays. Harper's efforts paid off with multiple acceptance offers, each accompanied by a significant scholarship.

“I'm so grateful to be at a school that has such a supportive career center with many resources devoted to helping me,” Harper says.

*What's next?* Harper accepted a full-ride scholarship to the University of Maryland. She starts law school in the fall.

## WELCOMING FIRST-GENERATION STUDENTS

At Smith, 17% of our students identify as the first in their family to attend college. To help support these students, the Lazarus Center regularly partners with First Gen Out Loud—a writing and community-building program for first-generation Smithies. In September, 24 members of First Gen Out Loud visited the Lazarus Center for a warm and welcoming introduction to our career development resources, and to discuss basic strategies for networking with confidence. Students then practiced their networking skills during a pizza dinner with staff.



## INCLUSIVE RECRUITING SUMMIT

Students, employers, and alums connected at the third annual Inclusive Recruiting Summit, a one-day event co-hosted with Wellesley College. The event uplifts important conversations about inclusion in recruitment processes and retention strategies. The summit included a fireside chat with **Nafeza Kingston '11**, panels featuring students and alums, and a career fair. New this year: Employers and students partnered on an interactive exercise to design an ideal inclusive workplace, which was a welcome opportunity for networking and discussion.

## NEW PROFESSIONAL DEVELOPMENT FUND

This year, **Natasha Woon '25** was one of 80 students who were each given up to \$800 to attend an academic or professional conference that aligns with their career interests. Woon attended and presented at the Society for Neuroscience's October conference in Chicago, Illinois. "This experience and exposure at the national level is critical in her pursuit of a career in neuroscience research," says Catherine Mikkelsen, who teaches Research in Human Neuroscience (NSC 335), the course in which Woon conducted original research for her presentation.

Given the high impact of these experiences, the Lazarus Center successfully pursued funding to expand access to all students and is excited to announce a five-year pilot of the Lazarus Center Professional Development Fund, which begins in fall 2025. This fund provides all undergraduate students with access to \$1,000 to support conference attendance and professional development experiences during their time at Smith.

## STUDENT ORGANIZATION SUPPORT

The Lazarus Center is thrilled to support an increase in the number of student-led career conferences and programs. Some highlights from this year include co-sponsorship of:

- **Unlocking Potential: Building Businesses From Unseen Skills**  
An annual career summit hosted by the Black Students' Alliance. This year's theme focused on turning unique skills into viable businesses.
- **Pa'Lante: Voices in Action**  
An annual conference hosted by the Latin American Students' Organization that fosters career development, networking, and experience across various sectors.

## EXAM PREPARATION AND RESOURCES FOR GRADUATE & PROFESSIONAL SCHOOL

Students and recent graduates who want to take a prep course for the DAT, GMAT, GRE, LSAT, or MCAT are eligible for reduced rates or reimbursement and are also eligible for a one-time MCAT exam registration fee reimbursement.

# \$1,000

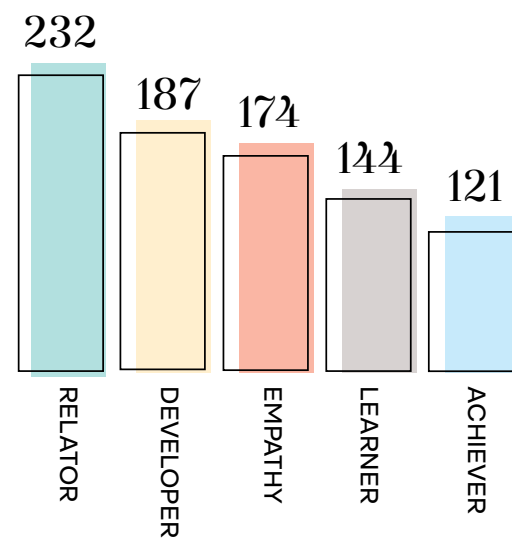
THE AMOUNT EVERY  
UNDERGRADUATE  
STUDENT HAS ACCESS  
TO FOR PROFESSIONAL  
DEVELOPMENT  
EXPERIENCES



## KNOW YOUR STRENGTHS

Before arriving on campus, incoming first-year students were invited to take Gallup's CliftonStrengths assessment, and more than two-thirds of them participated. Students who completed the assessment received a personalized report detailing their top five strengths, along with resources and recommendations to help them understand and maximize their talents both in and out of the classroom. Throughout the fall semester, we offered workshops focused on using their strengths to enhance collaboration and support career exploration.

TOP FIVE STRENGTHS OF THE CLASS OF 2028



Of the 438 students who took the assessment, 232 (more than half) demonstrated strong relator capabilities, reflecting their ability to build deep working relationships that drive collaborative achievement. Notably, relator, developer, and empathy are all within the Relationship Building domain—skills that are increasingly prioritized by leading organizations according to research from McKinsey & Company, *Harvard Business Review*, and the World Economic Forum. “These are precisely the leadership competencies that distinguish successful change makers across industries,” says **Patricia Woods ’00**, assistant director of career exploration.

## EARLY AWARDS

Continuing our emphasis on engaging students early in their undergraduate careers, the Fellowships & Postgraduate Scholarships team supported nearly 50 first-years, sophomores, and juniors in their pursuit of prestigious awards.

Notably, this year, *three* Smith students earned the Goldwater Scholarship, which recognizes future leaders in scientific research:

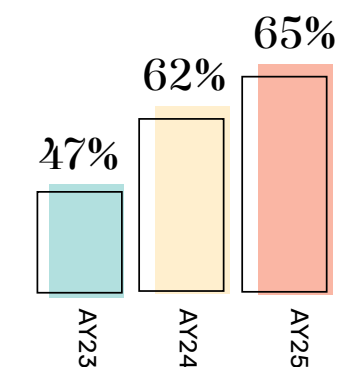
- **Annabelle Li ’26** is a neuroscience major whose research investigates the cognitive and behavioral coordination between two people.
- **Kerry Seekamp ’26** (pictured) is majoring in mathematics and works at the interface of algebra, combinatorics, and graph theory.
- **Sanjana Yasna ’27** is a computer science student who has integrated her interest in machine learning with protein function prediction.



## BY THE NUMBERS

Career development is valuable and accessible to all Smithies, starting on day one. This year, we continued to prioritize engagement with first-year students. One example: We hosted or supported 17 events during Orientation and the First-Year Experience Program to give new students a well-rounded introduction to career development resources.

PERCENTAGE OF FIRST-YEAR STUDENTS WHO PARTICIPATED IN EVENTS AND/OR ONE-ON-ONE ADVISING:



154

FIRST-YEAR STUDENTS PARTICIPATED IN LAZARUS CENTER EVENTS BEFORE CLASSES STARTED

Grouped by professional area, Career Communities are vibrant knowledge-sharing spaces for students exploring potential career paths. The six communities are:

- Arts, Media, & Communications
- Business, Finance, Consulting, & Entrepreneurship
- Education, Nonprofit, & Social Impact
- Government, Law, Policy, & International Affairs
- Health Professions
- STEM

Each community supports a student-centered cohort and offers curated resources and events. Students regularly connect with peers, alums, and industry experts—opportunities that were especially valuable this year as many sectors experienced rapid transformation.

Career Communities rose to the challenge by empowering students to navigate change with confidence and vision. Each community launched new programs, refreshed resources, and actively leveraged our network of alums for wisdom and inspiration. As potential career paths continue to evolve, so do the Career Communities, offering relevant and meaningful support to students every step of the way.

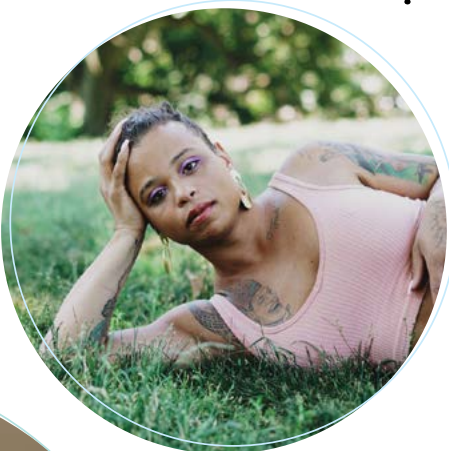


**69**  
EVENTS HOSTED  
BY CAREER  
COMMUNITIES

## Arts, Media, & Communications

### BUILDING A CREATIVE CAREER

Staff and faculty host an array of visiting artists on campus. In October, the Smith Office for the Arts (SOFA) arranged for acclaimed artist/filmmaker/writer/activist Tourmaline (pictured) to be the keynote speaker for Cromwell Day celebrations. This inspired us to launch a series of career-centric events in coordination with existing visits—we call it the Building a Creative Career series. Following Cromwell Day, Tourmaline led an inspiring lunch discussion with 30 students who are considering creative careers. She shared about building a community of creative support, navigating the arts economy, and staying true to one's vision.



### EXPANDING PARTNERSHIPS

The Arts, Media, & Communications Career Community strengthened and broadened its relationship with many campus partners this year. Notable collaborations include:

### GETTING PUBLISHED

Campus Partners:

- Department of English Language & Literature
- The Boutelle-Day Poetry Center

Five publishing-industry professionals—including three alums—joined 60 students for a networking event and panel discussion.

### CAREERS IN GAME DEVELOPMENT

Campus Partners: Game Development Club

Students gained leading-edge insights on the digital gaming industry from alums who are experts in their field.



“I wanted to find an internship where I could work in an artist’s studio or a gallery. I started to ask around and happened upon Debra—who leads the Arts, Media, & Communications Career Community—at a cohort lunch. We met multiple times after that, and she connected me to an artist she knows. From there, I was able to piece together an internship assisting two painters in New York City. I learned so much from just observing and absorbing information.”

— RUBY GOLDSTEIN '27, A HISTORY AND STUDIO ART MAJOR

# Business, Finance, Consulting, & Entrepreneurship



## AN ENTREPRENEUR’S JOURNEY

Renowned shoe designer Stuart Weitzman led an inspiring conversation about risk and imagination. A room full of students representing a range of disciplines learned how Weitzman turned a passion into the internationally renowned company that bears his name.

After the speaking event, eight students were able to continue conversations with Weitzman over dinner in the Julia McWilliams Child ’34 Campus Center.

Image to the left: Students model designer shoes during the speaking event.

## WOMEN IN FINANCE

A series of lunch events throughout the year featured industry experts representing a variety of career paths. One lunch, for example, focused on demystifying finance careers. Local finance experts from St. Germain Investments led a discussion about careers beyond Wall Street, the power of financial planning, and portfolio management.



“The discussion opened my eyes to how I can get started in the finance world. Leading up to this event, I had been exploring financial advising as a career and I was excited to hear from women currently in that position. Their advice stuck with me and I’m using it to sketch my own path. The most important piece of advice: Walk into any finance career field knowing I deserve to be there because of my skills and abilities.”

— MAAME AMOAH ’28, A QUANTITATIVE ECONOMICS MAJOR

# Education, Nonprofit, & Social Impact

## PATHWAYS INTO EDUCATION

The Summit on Undergraduate Pathways into Education—a full-day event featuring interactive workshops, panel discussions, and networking experiences at Bank Street College of Education in New York City—exposes students to the many diverse opportunities available in education. During the

inaugural 2025 summit, Smithies gained a clearer understanding of how teaching, policy, nonprofit leadership, and community engagement work together within the education system. They returned to Smith ready to take the next steps in their own career journeys.



“I loved learning about Bank Street’s teaching philosophies directly from their teachers. During a tour of the school, we got to see elementary and middle schoolers engaged in project-based learning. I hope to make my future classroom as engaging and interdisciplinary!”

— AUDREY BLOOM ’25, A HISTORY AND EDUCATION MAJOR



## CONVERSATION WITH DORIS JUAREZ ’17

During one of our monthly Career Community lunches, students had the chance to connect with **Doris Juarez ’17**, a first-generation Latina professional dedicated to expanding college access for low-income and underrepresented students. Juarez’s insights resonated deeply with students, many of whom saw their own experiences reflected in her journey from Smith to her role as a project manager for postsecondary education at Strada Education Foundation.

Juarez shared practical advice on navigating careers in education and social impact, including: “Take the time to do the on-the-ground work in the field that you want to impact. Having a variety of work experiences will allow you to think about the realities that come with decision-making, and it will make you a more empathetic leader.”

# Government, Law, Policy, & International Affairs

## MEETING THE MOMENT

This year, we supported students navigating career paths that are increasingly shaped by uncertainty—especially in government, law, and public policy. During drop-in hours in the days following the 2024 presidential election, students revealed a growing set of questions about what might change and how to prepare. Those conversations sparked a broad response that leans into the insights, experiences, and adaptability of alums.

We quickly hosted Navigating Federal Careers Amid Political Change, a panel featuring alums serving as appointees, permanent public servants, and congressional staffers. They shared how they’ve built careers in government through transitions and shifting priorities, offering students insight into maintaining purpose and momentum amid shifting political and institutional landscapes.

The conversation continued in the spring semester with the panel What Impact Will You Make?: Shaping the Future Through Policy, which highlighted alums working in nonprofit and policy-focused roles across education, refugee integration, and social advocacy.

Our programming this year showcased the wide range of paths students are pursuing, and reinforced that there are always ways to continue the work, stay grounded in values, and move forward with purpose.



“Meeting alums who have continued to do critical work across presidential administrations gives me hope for the future. I’ve been able to refocus my mindset on chasing smaller wins, working across party lines to pass bipartisan legislation, and maintaining connections with people working inside and outside the federal government.”

— SOPHIE NUNZIATI '27, MODERATOR OF THE NAVIGATING FEDERAL CAREERS AMID POLITICAL CHANGE PANEL AND A 2025 JEAN PICKER SEMESTER-IN-WASHINGTON PROGRAM PARTICIPANT

# Health Professions

## A BRAND NEW COURSE

In our new credit-bearing career exploration course—the first of its kind at Smith—students reflect on their strengths, values, identities, and interests in health care careers and create a four-year plan that includes academic and extracurricular experiences. Designing Your Path: Health Professions (IDP 132) is taught by Elly Mons and Jess Pfeffer, our health professions advising team, and prepares students to overcome challenges, identify and address gaps in their experiences, build community, and discuss their motivations and career goals.

**Dr. Gail Chorney '74** (pictured), vice chair of the department of orthopedic surgery at New York University’s Grossman School of Medicine, is one of 10 guest speakers who presented during the class’s first semester. Chorney shared her journey from Smith to medical school but also focused on leadership and how she has leveraged her interests, strengths, and transferable skills to be successful as both a surgeon and a health care administrator.

## BECOMING A CERTIFIED MEDICAL ASSISTANT

A new partnership with CapYear Academy prepares students to pass the Certified Clinical Medical Assistant exam. This robust prep course is offered at a reduced cost for current students and alums. Earning this certification opens the door to patient-facing jobs in a wider array of health care facilities, helping Smithies gain relevant clinical experience before applying to health professions schools.

“Every [guest speaker] has added a new, essential layer to the knowledge I am bringing with me as I go into the medical field. The diversity of voices and professions is teaching me things beyond the traditional medical education framework, which is amazing.”

— MADDIE HOLUB '28,  
A NEUROSCIENCE MAJOR



STEM

INCREASING EXPOSURE

We’ve been able to advance technology and data science initiatives by partnering with faculty in related departments, with student organizations, and with alums in related careers. Notable collaborations include:

EMPOWERING CIVIC  
ENGAGEMENT: UNLOCKING  
THE IMPACT OF DATA

Featured Alum:

**Victoria Tse ’20**, outreach and data analysis specialist at the National Study of Learning, Voting and Engagement

Ahead of the November elections, Tse unpacked data reported about Smith’s campus climate for political engagement and empowered students to think critically about how to exercise their voices.

BREAKING THROUGH

More than 20 Smithies were admitted to Break Through Tech’s AI Program, a one-year experience that helps “previously overlooked tech talent” gain the skills they need to get jobs in artificial intelligence, machine learning, and data science.

COMPUTER SCIENCE AND  
STATISTICAL & DATA SCIENCES  
ALUM PANEL

Featured Alums:

**Caitlin Harren ’06**, director of social responsibility and sustainability solutions at Amazon

**Angela Fultz Nordstrom ’92**, then vice president of national sales at Tyler Technologies

**Kelly Pien ’20**, senior business intelligence architect at Slack

**Madison Williams ’21**, former analyst at the Center for Effective Philanthropy

Alums in a variety of roles and industries shared their career stories and advice for students who are interested in similar paths.

WHAT TO KNOW IF YOU’RE  
CONSIDERING A CAREER  
IN PHARMA

**Judy Campagnari ’85** (pictured), who received an MBA from the University of Pittsburgh and is head of the Alliance & Integration Team for Alexion, AstraZeneca Rare Disease, joined us in both the fall and spring semesters to talk about careers in the pharmaceutical industry and share general insights for students interested in scientific careers. In her most recent visit, Campagnari discussed the types of jobs required at each stage of drug development, the ways in which the scientific industry differs from academic research, and how a background in biochemistry has helped her on the business side of pharmaceuticals.



Career Treks

Career treks offer students immersive, career-focused experiences through curated site visits across sectors. Each trek features Smith alums and employer partners who share their career journeys and provide insider perspectives on industry trends. Highlights from this year’s treks include:

ARTS TREK BOSTON, MASSACHUSETTS

In collaboration with the Smith Office for the Arts (SOFA), students met curators and artists at the Museum of Fine Arts, Boston.

FINANCE & CONSULTING TREK BOSTON, MASSACHUSETTS

MFS Investment Management, CIBC Private Wealth, and Charles River Associates offered workplace tours and hosted networking sessions with Smithies interested in financial services, investment banking, and consulting.

GOVERNMENT & SOCIAL IMPACT TREK WASHINGTON, D.C.

Over three days, students connected with professionals in various sectors at Capitol Hill, the Brookings Institution, Feeding America, and the Pentagon. A tour of the Capitol led by a Smithie intern and a networking event with the Smith College Club of Washington, D.C., were among the highlights.

JOURNALISM & MEDIA TREK  
SPRINGFIELD, MASSACHUSETTS

Visits to New England Public Media and Western Mass News highlighted the important role of local media.

TECH TREK NEW YORK CITY, NEW YORK

Students explored innovation at IBM and LinkedIn via panels and behind-the-scenes tours.



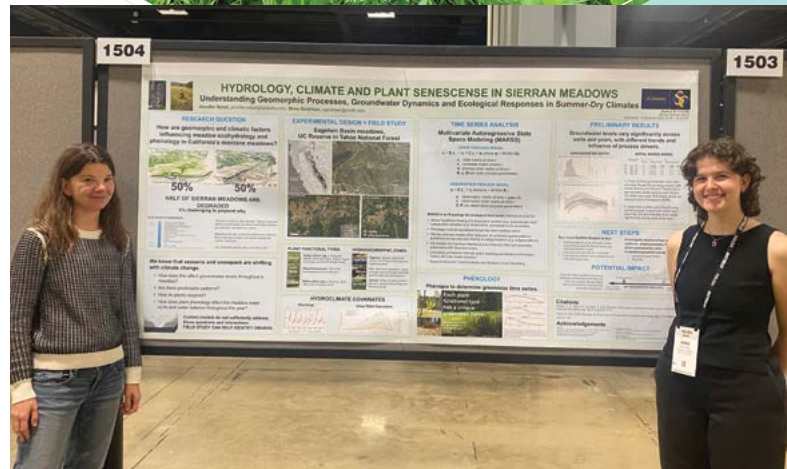
## SMITH CAREER CONNECT

Smith Career Connect is an exclusive platform where students and alums can engage in career conversations. Thousands of alums have already signed up to be informal mentors, and more join every day. By sharing their experiences and having candid conversations, alums provide significant support to the next wave of working Smithies. Some of the features available to students include:

- A database of alums that can be filtered by professional area, organization, location, major, and more.
- Templates and prompts to improve networking skills.
- Career-related group conversations.

“I messaged [Jen Natali ’96] because she was working in environmental science, which is what I hope to pursue a career in. She was so kind and eager to talk to me. We arranged a Zoom call where she shared details about her research and the journey that brought her to her current stage. I was interested in her PhD research, and almost immediately she offered me an opportunity to help. I used my Praxis stipend to spend my summer in the Sierra Nevada mountains in California, collecting data. I got great practical research experience and built a fantastic relationship with my now mentor, all thanks to Career Connect!”

— SHIRA GOLDMAN ’25, AN ENVIRONMENTAL SCIENCE AND POLICY MAJOR



Top: Shira Goldman ’25 (left) with Jen Natali ’96 researching hydrogeomorphic processes.  
Bottom: Natali (left) and Goldman presenting their research at the American Geophysical Union conference in Washington, D.C.

## ALUM IN ACTION

### Mei-Ming Casino ’96

INTEGRATION PROGRAM LEAD AT NETFLIX

In November, Casino hosted an on-campus discussion with students focused on careers in entertainment and tech.

“I’m compelled to be a resource for students navigating what can feel like a very uncertain, competitive, and quickly evolving job market. I’ve built a career in media and technology, industries that often don’t have clear or traditional entry points or career paths, and I want to offer a real-world perspective on what that can look like. Especially for women just starting out, it’s easy to feel like there’s one ‘right’ way to launch your career when in reality there are many ways to approach the start of a career.

Connecting with students has always been important to me because I remember what it felt like to be at Smith, full of curiosity but without a clear guide for what came next. I didn’t have a mentor back then, and I now know just how valuable that kind of support can be. Later in my career, having people who saw my potential and helped me navigate new challenges made all the difference. Staying connected with students is my way of paying that forward—and hopefully helping them feel a little more seen and supported as they take their next steps.

My conversations with students solidified a long-held dream of starting my own career coaching business. Their questions, honesty, and drive were a huge motivating factor in turning that passion into something real. I plan to keep showing up for students and early career professionals in any way I can because sometimes, all it takes is one conversation to help someone see what’s possible.”



## WAYS WE PARTNER WITH ALUMS:

- One-on-One Coffee Chats
- Career Treks
- Industry Panels
- Internships
- Jobs
- Job Shadowing
- Mock Interview Days
- Networking Sessions
- On-Campus Recruitment Events

700+  
ALUM EMPLOYER  
PARTNERS

# Internships



85%

OF SMITH STUDENTS COMPLETE  
AT LEAST ONE INTERNSHIP  
BEFORE GRADUATION

## SMITH IN THE WORLD

Smith in the World is an annual conference series that showcases and celebrates students' off-campus experiential learning. Student panelists reflect on their internships, community service, study abroad trips, and research, and share about the impact those experiences have had on their academic work and future plans. This year, nearly 300 people from around the world joined our live virtual panels, and another 500 watched the recordings.



## PRAXIS FUNDING

Praxis funding offers students up to \$4,500 to participate in a qualified unpaid summer or interterm internship. This resource makes internships accessible to all students so that they can build skills and explore practical work experiences in their areas of interest.

"Almost everything I did in my internship was either a new skill or a new way to build on skills I already had," says **Avery Maltz AC '25**, who used Praxis funding to intern in the Sybil Gotsch Forest Ecophysiology Lab at the University of Kentucky in the summer of 2024. This experience was integral to Maltz's career goal: studying tree canopy conservation in California's redwood forests.

"This internship has provided a huge professional advantage toward this goal due to the nature of the field work, and also because Professor Gotsch has experience doing research in redwoods," says Maltz. In fall 2025, that goal will be realized when Maltz starts the ecology and evolutionary biology doctorate program at the University of California, Santa Cruz.

## THE IMPORTANCE OF THE JOURNEY

At Smith, the process of applying for a fellowship is just as—if not more—important than the final result. Putting together an application helps students clarify their goals for the immediate future as well as their longer career arc. Fellowship applications also help them think through how to build and integrate the skills and experience necessary to achieve their goals. Students must think through what they plan to do, why they want to do it, and the longer-term impact of their projects and studies.

## SMITH'S FIRST SCHWARZMAN SCHOLAR

This year, **Cowiya Arouna '21** was selected as one of 150 Schwarzman Scholars from a pool of nearly 5,000 applicants. This scholarship funds a yearlong master's degree program in global affairs at Tsinghua University in Beijing. The first Smithie to be selected for Schwarzman, Arouna applied for this fellowship to make a career pivot. After graduating from Smith, she worked as a member of a global investment team at Bank of America in New York City. With this fellowship, Arouna will be able to explore aspects of China-Africa relations with the goal of supporting future business ventures in Africa.

"I wrote an investment thesis about why this is a good time to be investing in technology in Africa. Just doing the research highlighted how much China is doing in Africa but also led me to study more about China's economic policies and reform. The core of it was about the Chinese people's embrace of their culture, and through that, finding markets and ways to grow. And I thought that's really applicable to Africa because Africans need African solutions and financial partnerships that are coming from an equal place."

— COWIYA AROUNA '21

# Fellowships



## BETTER TOGETHER

The Lazarus Center routinely engages with students, alums, employers, and our peers. We work closely with **Alumnae Relations**, the **Office of the Class Deans**, the **Accessibility Resource Center**, the **Office for Equity and Inclusion**, the **Smith Office for the Arts (SOFA)**, **academic departments**, and many others. Over the past year, we've focused on strengthening our partnerships to increase career-centric programming throughout campus. This includes one-on-one advising sessions for student-athletes in Ainsworth Gym, for Ada Comstock Scholars in Cutter House, and for engineering students in Ford Hall.

ADDITIONALLY, WE FREQUENTLY PARTNER WITH OTHER LEARNING CENTERS AT SMITH, INCLUDING:

**Jill Ker Conway Innovation & Entrepreneurship Center**, which empowers students to navigate life's complexities by equipping them with the skills to move forward intentionally, manage resources confidently, and take financially sustainable action—encouraging them to be ethical decision-makers who drive change.

**Jandon Center for Community Engagement**, which fosters opportunities for Smith students to engage actively with the community and practice responsible citizenship.

**Wurtele Center for Leadership**, which equips all members of the Smith community with the creativity, courage, and collaborative capacity to lead positive change at scales both large and small.

PHOTOS BY: Matt Barton, John Dempsey, Anna Stone Ewing, Liliana Hetherman '25, Olayemi Ibrahim, Kat Morelli, and Jess Scranton

Together, we support Smith's mission of developing engaged global citizens and leaders to address society's challenges.

Thank you for your partnership, and we look forward to seeing you in McCartney Hall!



SMITH COLLEGE<sup>®</sup> **150**  
YEARS